

NORTH KANSAS CITY CONNECTION

A NOTE FROM THE MAYOR

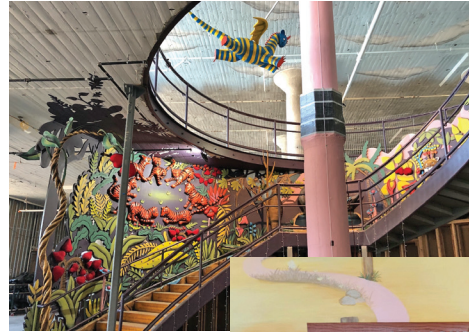
SPRING 2024

WELCOME SPRING

Spring is here, and for many of us, that means enjoying warmer weather and time outdoors with family and friends. Spring can also mean severe weather season, especially here in the Kansas City region. We encourage you to develop an emergency plan, should a disaster strike our region, community, or your family. Visit [ready.gov](https://www.ready.gov) for more information and to start an emergency plan for you, your family, and your loved ones.

Warmer weather also includes opportunities to participate in the Citywide Garage Sale, host a neighborhood block party, visit the Gorman Pool, or add native plants and trees to your yard to provide a habitat for animals and insects. Parks & Recreation has many great events for you and your family to enjoy this spring and summer. You can learn more about all of these topics and more in this edition of the newsletter.

We continue to make progress on several of our Strategic Plan goals, including creating a green City fleet, using native plants in our public flower beds, and conducting a feasibility study for a multi-modal trail along the southern tract of our levee system. These actions will help ensure we are good stewards of our resources, and making wise investments for the next generation of NKC residents.



The much-anticipated opening of The Rabbit hOle, located at 919 E 14th Ave., has arrived! The Rabbit hOle is the first museum of its kind in the United States, and we are proud that they call North Kansas City home. Spanning three floors, The Rabbit hOle brings countless works of children's literature to life. Visitors become explorers in an immersive, multi-sensory, narrative landscape filled with discoverable environments. Stop by and dive into the storybook world inspired by children's classics.

For more information about The Rabbit hOle, visit www.rabbitholekc.org.

PRSRRT STD
U.S. POSTAGE
PAID
K.C., MO
PERMIT NO. 4166

NORTH
KANSAS CITY
Virtually Urban. Supremely Suburban.
City of North Kansas City
2010 Howell Street
North Kansas City, MO 64116

- 2 April Election
City Boards/LiNKCity
- 3 Spring Weather
- 4 Riverfront Trail
Minor Home Repair
- 5 Spring Safety Tips
- 6 Native Plants
Electric City Fleet
- 7 Stormwater Tips
Gorman Pool Passes
- 8 Resident Resources
- 10 P&R Programs
- 14 Library Programs
- 16 Community Calendar



WATER QUALITY REPORT

The Water Quality Report is available on the Public Works page of the City's website. Visit www.nkc.org for more information.

APRIL ELECTION



The City of North Kansas City will hold a General Municipal Election on April 2, 2024. Polls will be open at the NKC YMCA from 6 a.m. to 7 p.m. This year's election is for the Council seats:

Ward 1 two-year term

- Anthony Saper

Ward 2 two-year term

- Tom Bailey
- Lyndsey Magrone

Ward 3 two-year term

- Linda Alvarez

Ward 4 two-year term

- Katie Stokes

Call the Clay County Election Board, 816-415-8683, for absentee ballot information.

VOLUNTEER FOR A CITY BOARD



The City has eleven volunteer boards filled by residents interested in public decision-making and civic service. We strive to have membership represent the full range of diversity in our community. These boards include:

- Board of Zoning Adjustment
- City Planning Commission
- Crummett Beautification Committee
- Hospital Board of Trustees
- Industrial Development Board
- Equity and Inclusion Committee
- Library Board
- Liquor Control Board of Review
- Parks and Recreation Board
- Police and Fire Personnel Board
- Tax Increment Financing Commission

For more information or to apply for a board, please visit www.nkc.org. You may also pick up an application at City Hall or call the City Clerk at 816-412-7815.



Welcome to the home of North Kansas City's own fiber-optic broadband network. As the only complete underground fiber network north of the river, LiNKCity delivers high-speed internet throughout the

city to both business and residential homes.

For residential customers in the North Kansas City proper, basic service includes 1gbit (1000mbit) internet service. There is no monthly fee, but there is a \$300 activation fee due at the time of the activation.

For questions or to sign up for service today contact KC Fiber customer service at 816-412-7990. Visit kcfiber.com/residential for more information.

SPRING WEATHER PREPARATION

Spring is the time of year when many things change—including the weather. Temperatures can swing back and forth between balmy and frigid. Sunny days may be followed by a week of stormy weather. Sometimes extreme weather changes can happen within the hour.

What's scarier than a flood, thunderstorm, or tornado? Getting stuck in one without a plan. Get started today on your game plan and that way your family will be prepared when disaster strikes. Some items to include in your emergency kit are:

A LIST OF IMPORTANT PERSONAL INFORMATION, INCLUDING:

- Telephone numbers of neighbors, family, and friends
- Insurance and property information
- Copies of birth certificates
- Telephone numbers of utility companies
- Medical information

A FIRST AID KIT:

- Non-latex gloves
- Absorbent compress dressings
- An assortment of adhesive bandages
- Tweezers
- Antibiotic ointment
- Scissors
- Sterile gauze pads in assorted sizes
- Adhesive cloth tape



EMERGENCY PREPAREDNESS KIT:

- Weather radio
- Bottled water
- Non-perishable food
- Flashlight
- Extra batteries
- Chargers
- Medications
- Person hygiene items
- Blankets or sleeping bags

Prepare your family members for the possibility of severe weather. Tell them where to seek appropriate shelter as soon as they are aware of an approaching storm. Practice your emergency plan for every type of severe weather. Show family members where the emergency supplies are stored, and make sure they know how to turn off the water, gas, and electricity in your home.

Often by the time we are aware of an approaching storm, we have little if any time to prepare for it. Take the surprise factor out of severe weather and prepare yourself, your family, and your home. If extreme weather does occur, you'll be ready for it.

BUILD A KIT

Include enough food, water, and medical supplies for your needs in your emergency kit to last for at least 72 hours.



Ad Council Ready.

READY.GOV/MYPLAN

FOR MORE INFORMATION ON HOW TO PREPARE AN EMERGENCY PLAN, VISIT READY.GOV.

RIVERFRONT LEVEE TRAIL STUDY UPDATE



Last fall, North Kansas City began a new feasibility study for a multi-modal trail along the southern tract of our levee system with the assistance of a Mid-America Regional Council (MARC) Planning Sustainable Places (PSP) grant. This project continues the implementation efforts of our 2020 Bicycle Master Plan.

The project has been evaluating the feasibility of creating a trail that would begin near the Heart of America Bridge and extend eastward along the levee before heading north towards Armour Road and branching eastward toward the Chouteau Bridge.

To date, the project team has analyzed existing data and conditions along the levee, and held three steering committee meetings and several stakeholder meetings to better understand the potential trail's opportunities and challenges.

The first community open house was held on November 6 at the North Kansas City YMCA, where over 50 participants shared their preferences for route alignment and trail amenities. Based on community and stakeholder feedback, refinements were made to determine a draft route alignment which was shared at the second and final community open house held on March 4. Participants viewed the updated trail alignments and the findings of the draft report. A summary of the community open houses can be found at www.nkc.org/leveetrail.

The next steps will be to make any revisions to the draft report based on community feedback and conduct a final steering committee meeting in April.

The final feasibility report is scheduled for June 2024.



MINOR HOME REPAIR AND HOME MODIFICATION PROGRAM

North Kansas City partnered with Northland Neighborhoods, Inc. and Rebuilding Together Kansas City to develop the NKC Minor Home Repair and Home Modification Program to support low- to moderate-income homeowners with needed home repairs. This program assists homeowners who do not have the financial means to respond to code violations and/or modify their homes to accommodate their mobility and access needs. Safety repairs and modifications can include:

- Modifications to bathrooms and showers
- Replacing or repairing steps, stair railings, and walkways
- Minor home repairs, including electrical and plumbing repairs
- HVAC repair/replacements
- Exterior home repairs

For more information, please contact Community Development at 816-274-6006 or visit www.nkc.org.

SPRING SAFETY TIPS



In an ongoing commitment to your safety, the North Kansas City Police Department is sharing crucial tips to keep you and your belongings secure. Whether you're cruising on two wheels or safeguarding your four-wheeled companion, these quick tips can make a significant difference.

BIKE SAFETY TIPS

Wear a Helmet: Protect your head with a properly fitting helmet. Safety first, always!

Be Visible: Enhance your presence with bright or reflective clothing. Lights and reflectors on your bike ensure you're seen on the road.

Follow Traffic Rules: Treat your bicycle as a vehicle; obey traffic signals, use hand signals, and ride with the flow of traffic.

Stay Alert: Keep your eyes on the road, watch for potential hazards, and avoid distractions.

BIKE THEFT

Lock It Right: Invest in a quality lock, securing both the frame and wheels. Use two different types of locks for added security.

Choose Smart Parking: Opt for well-lit and busy areas. Thieves prefer the shadows; deny them the opportunity.

Register Your Ride: Take clear pictures of your bike and note its serial number. This information can be useful for identification and recovery purposes.



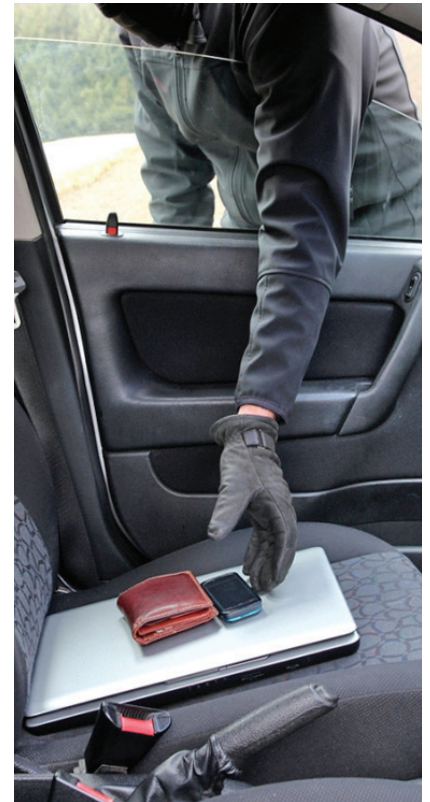
AUTO THEFT TIPS

Lock Up Tight: Always lock your vehicle and close windows fully. Avoid leaving spare keys inside your vehicle. Thieves love easy targets.

Anti-Theft Devices: Invest in steering wheel locks, brake pedal locks, or electronic immobilizers.

Park Wisely: Choose well-lit parking spots, especially at night. Thieves are less likely to target vehicles in areas with good visibility.

Keep Valuables Out of Sight: Don't leave valuable items in plain view. Items like laptops, smartphones, or bags can attract thieves. Use the trunk or keep them hidden.



COFFEE WITH HEROES



Join your local first responders for an informal gathering to build relationships, ask questions, and strengthen community bonds over coffee!

NORTH KANSAS CITY YMCA
WEDNESDAY, APRIL 24 | 9-11 A.M.
1999 IRON ST., NORTH KANSAS CITY, MO



KNOW YOUR ROOTS: NATIVE PLANTS

The dense clay soil in our region makes it difficult for water to soak into the ground quickly. As natural vegetation is replaced with non-native plants, less stormwater is absorbed into the ground, leading to more stormwater runoff and water pollution. Landscaping with native plants, reducing the amount of turf grass, and replacing it with larger garden beds, which include native plants, is a great way to reduce the amount of runoff that leaves your property.

Native plants have deep roots which can penetrate the native soil to depths of up to 16 feet. During the dry summer months, native root systems reach deep into the ground to find water, so native plants are more drought-resistant than non-natives. They are also low maintenance. This means native plants save residents time and money because they require little or no lawn chemicals and less irrigation than non-native plants. Native plant gardens will also bring more native songbirds and butterflies to your yard.

Most lawns in our region are planted with non-native turf grasses like fescue. While these grasses are

attractive, their short roots do not absorb and filter water effectively. A typical lawn absorbs only 10% of the stormwater a natural landscape can absorb. Non-native lawns also require more mowing and watering than native landscapes. Most turf grasses are high maintenance, especially during drought conditions, but native buffalo grass is an effective alternative because it is low maintenance, increases infiltration, and is drought resistant due to its long roots. Turf grass roots are 1-2 inches long, while buffalo grass has roots that reach up to 6 feet.

Here are some facts about lawn maintenance and how it impacts the environment:

- A gas-powered lawn mower pollutes as much in one hour as 40 automobiles driving.
- 30-60 percent of urban fresh water is used for watering lawns.
- 67 million pounds of pesticides are used on U.S. lawns each year.
- 580 million gallons of gasoline are used in lawnmowers each year.

ELECTRIC CITY FLEET VEHICLES



Last year, the City Council approved the purchase of three electric vehicles and one commercial electric lawn mower, initiating the first step towards transitioning to a sustainable fleet of City vehicles and equipment. As of early February 2024, these vehicles have been successfully integrated and are now actively working throughout North Kansas City on a daily basis.

In conjunction with this initiative, dedicated electric vehicle charging infrastructure has been installed at three City buildings, ensuring the new vehicles are adequately supported and can be efficiently charged. This infrastructure supports ongoing use and potential expansion of electric vehicles within the City fleet.

The three Ford F-150 Lightning electric trucks are strategically utilized across various departments to evaluate their capability to meet the everyday operational demands of the City's diverse vehicle fleet. The Fire Department, Water Utility Department, and the Municipal Services Department each operate one of these electric utility trucks, with the Water Utility Department also utilizing the electric mower. This evaluation phase is designed to assess the positive impacts of these electric vehicles on City operations and to explore the viability of further integrating electric vehicles into the City's fleet, aligning with the City's strategic environmental and sustainability goals.

WASH YOUR CAR THE SAFE WAY!



If car washing is done incorrectly, a clean vehicle could lead to dirty waterways.

Water entering storm drains, unlike water that enters sanitary sewers, does not undergo treatment before it is discharged into

our waterways. When cars are washed on streets and driveways, that dirty, soapy water eventually flows into our rivers (Missouri River), streams, creeks and lakes.

Washing your car is only a problem if you don't know where or how to do it correctly. Did you know that the average homeowner uses 116 gallons of water to wash a car? Most commercial car washes are far more efficient, using 60 percent less water for the entire process than a homeowner uses just to rinse the car.

The best way to minimize the effect washing your car has on the environment is to use a commercial car

wash. Most locations reuse wash water several times before sending it to a treatment facility.

However, if you choose to wash your car at home or on the street, these are some things that you can do to minimize the water quality impact:

- Use biodegradable, phosphate-free, water-based cleaners only.
- Minimize water usage by using a spray gun with flow restriction to minimize water volume and runoff.
- Wash on an area that absorbs water, such as gravel or grass. This can filter water before it enters groundwater or storm drains.
- Avoid washing cars on concrete or asphalt pavement unless it drains into a vegetated area.
- Always empty wash buckets into sinks or toilets.
- When planning a car wash fundraiser, try developing a partnership with a commercial car wash facility, or use a location that limits water runoff.

Missouri Area Regional Council, Water Education Committee



ANITA GORMAN POOL PASS PROGRAM

North Kansas City and the Kansas City Parks & Recreation Department have partnered to offer North Kansas City residents the opportunity to purchase City-subsidized passes to the Anita Gorman Pool. Passes will be available for sale at the NKC City Hall on Monday, May 6.

The Anita Gorman Pool opened in July of 2018 and is located in Gorman Park, 1101 NE 47th St., Kansas City, Mo. This accessible outdoor aquatic facility has one large 50-meter pool designed for both recreational and competitive swimming.

The Gorman Pool will open on Memorial Day and will close for the season on Tuesday, August 20. The pool will be open daily from Noon to 6 p.m.

For more information on lessons and programming visit www.kcparks.org/places/gorman-pool.

RESIDENT ANITA GORMAN POOL SEASON PASSES (PROOF OF RESIDENCY REQUIRED*)

PASS TYPE	RESIDENT FEE
INDIVIDUAL SEASON PASS	\$16.50 (NON-RESIDENT FEE – \$25)
VIP INDIVIDUAL SEASON PASS (BRING A GUEST EACH TIME YOU VISIT)	\$23 (NON-RESIDENT FEE – \$35)
FAMILY SEASON PASS	\$40 (NON-RESIDENT FEE – \$60)

*PROOF OF RESIDENCY INCLUDES A STATE-LICENSED IDENTIFICATION CARD, PASSPORT OR CURRENT UTILITY BILL.

RESIDENT RESOURCES



CITYWIDE GARAGE SALE MAY 18

CITYWIDE GARAGE SALE

The Citywide Garage Sale will be held on Saturday, May 18. The banner will be placed across Armour Road advertising the event a few weeks prior to May 18. We encourage you to take advantage of this Citywide event to clean out your homes and maybe even make a little money in the process. The Citywide garage sale does not require a permit to participate. In case of inclement weather, this event will be held the following Saturday, May 25.

GARAGE SALE PERMITS

Any household wishing to host a garage sale must apply for a permit prior to the date of the sale. A household is limited to two permits per year and must apply for a permit and pay a fee of \$3. The exception to this is participation in the Citywide sponsored garage sales in May and September.

ANIMAL VACCINATION DAY

Free rabies shots for pets of residents of North Kansas City will be available at City Hall on Saturday, May 4 from 2-4 p.m. At that time, residents will also be able to get their annual pet license. Licenses are free to all spayed or neutered pets; otherwise the cost is \$5 per pet. Other vet services are available for a fee, no checks accepted.



NEIGHBORHOOD BLOCK PARTY GRANTS

North Kansas City residents may apply for a grant to host a neighborhood block party. Each grant will reimburse eligible expenses up to \$400 per event. Eligible expenses include food, paper goods and entertainment/performers. Ineligible expenses include alcohol, tent and stage/riser rentals.

Block parties must be approved by the City Council by means of a short-term conditional use permit. Neighborhoods may receive the block party grant once per year. For more information, visit www.nkc.org or call 816-274-6000.



HOUSEHOLD HAZARDOUS WASTE DISPOSAL

Residents can bring their household hazardous waste to the Kansas City Regional Facility located at 4707 Deramus Ave. Hours are Thursday, 9 a.m. to 6 p.m.; Friday, 9 a.m. to 6 p.m. and Saturday, 9 a.m. to 4 p.m. For questions, call 816-513-8400.

RESIDENT RESOURCES (CONT.)

SOLID WASTE SERVICES

The following services are provided to all non-commercial properties:

Service	Day	Container
Trash Collection	Tuesdays & Fridays	Black Lid
Recycling	Tuesdays	Blue or Green Lid
Yard Waste	Wednesdays March - December	Biodegradable Brown Paper Bags
Bulky Items <u>(Limited to 5 household items)</u>	First Wednesday of the Month	

For special pickups, arrange with Jim's Disposal at 816-221-1932 for an additional fee.

Place containers at curbside/alleyway by 7 a.m. on collection days. Containers should be stored inside or on your side or rear yard next to the house. Empty containers should be removed from curbside/alleyway and stored the evening of pickup.

If your bins are broken or missing, please call Public Works at 816-274-6004.



YARD WASTE PROGRAM

The Yard Waste Program began on March 1, and continues every Wednesday through December. Yard waste (leaves and grass clippings) must be placed in biodegradable paper bags, which are available at City Hall at the discounted price of 10 bags for \$2. Plastic bags and non-biodegradable materials are not accepted. Small tree branches are accepted; however, they must be bundled and cannot exceed 4 feet in length.

BULKY ITEMS - FIRST WEDNESDAY OF THE MONTH

Bulky waste includes items such as kitchen appliances, furniture, mattresses, and other large items. Bulky items should be on the curb for pick up by 7 a.m. Do not place items at the curb earlier than the day before pick-up.

Please note that it is required for all "refrigerated appliances" to have the refrigerant removed before it will be accepted for pickup. In such cases, the owner will need a professional (such as an appliance repair shop), to remove the refrigerant prior to disposal.

Tires, substantial amounts of debris, major remodeling, or clean-up projects, including re-roofing and sheet rock replacement are not accepted. For residents requiring a pickup of more items, call Jim's Disposal at 816-221-1932 to arrange it for a fee of \$25.



COMMUNITY SHRED EVENT

SAT., APRIL 27, 9 A.M. TO NOON, CITY HALL

This free event provides residents, businesses, and the surrounding communities with an opportunity to have their confidential documents destroyed on site with cutting edge proprietary paper shredding technology.

Participants may bring a maximum of 3 boxes (box size is compatible with a copy paper box). Please secure your documents in a closed container — bags often tear or rip open, leaving your documents unsecured. Paper clips and staples are acceptable and can be left in your paperwork.

For more information, please contact the Public Works Department at 816-274-6004. Hope to see you there!

PARKS & REC **SPRING** 2024

APRIL THROUGH JUNE



BONEANZA

SATURDAY, APRIL 6
WAGGIN' TRAIL DOG PARK
1:00 PM - 2:30 PM
\$5 DONATION PER POOCH



ADULT COOKING CLASSES

PASSPORT TO THE MALDIVES

AGES 14+ | MS. HEATHER

Make Kopee Faiy Mashuni (Smoked Tuna and Kale), Aluvi Riha (Potato Curry), Rhia Folhi, Roshi Bread and Gabulhi Boakibaa cake for dessert.

Mon. April 22, 6-8 pm
Register by April 18
Fee: \$30

PASSPORT TO BELGIUM

AGES 14+ | MS. HEATHER

Make stuffed tomatoes, cheesy oven baked turnips, Flemish Stoemp Mash (creamy cabbage potato mash with roasted chicken sausage and bacon), and Belgian Sugar Pie.

Tue. May 7, 6-8 pm
Register by May 2
Fee: \$30

PASSPORT TO BANGLADESH

AGES 14+ | MS. HEATHER

Make Khurbo(chicken stir-fry), Bengali Dahl, stir-fry cabbage with garlic sauce, Aloo Jeera (potato with cumin), Ghugni, Tamarind Chutney and Orange Sandesh for dessert.

Mon. May 20, 6-8 pm
Register by May 16
Fee: \$30

PASSPORT TO INDIA

AGES 14+ | MS. HEATHER

Make vegetable Korma, Tomato Cucumber Raita, Bhindi Masala (Indian Okra Stir-fry), Hariyali Chicken (Green Curry), Creamy Zucchini Curry, and Galab Juman Dessert Parfait. Heat level on all dishes is mild, with the ability for students to make dishes spicier.

Mon. June 17, 6-8 pm
Register by June 12
Fee: \$30

PASSPORT TO JAPAN

AGES 14+ | MS. HEATHER

Our Annual Japanese Cooking Class is back with new recipes! Come and learn how to make Japanese fruit sandwiches, salmon ginger and soba noodle stir fry, radish and micro greens salad, Teriyaki Chicken, Onigiri and Spring rolls.

Tue. June 25, 6-8 pm
Register by June 20
Fee: \$30



CONTACT US/REGISTER: 816-300-0545 | PARKS_REC@NKC.ORG | NKCPR.ACTIVITYREG.COM

GARDENING CLASSES

GARDENING 101

AGES 16+ | MYRIAM TOTTA

Join our gardening workshop to learn the basics of growing a successful vegetable garden. From planning your space to preparing the soil and choosing the right plants, we'll cover it all. Whether you're a beginner or have some experience, this session is for everyone. Let's grow together!

Tue. April 30, 6-8 pm
Register by April 25
Fee: \$20

APARTMENT GARDENING

AGES 16+ | MYRIAM TOTTA

Join us for a fun, interactive class. We believe everyone can grow something, even in an apartment! You will explore some gardening basics, growing sprouts, and then finish our session by planting your very own small herb pot. Let's make gardening in limited spaces a fun and achievable experience!

Mon. May 20, 11 am - 1 pm
Register by May 15
Fee: \$35

HERB PLANTER

AGES 16+ | MYRIAM TOTTA

Join us for an evening of hands-on learning and create your own vibrant herb planter. Perfect for all skill levels, our garden coach will guide you in selecting, planting, and caring for a variety of herbs. Leave with a beautiful herb planter and the know-how to keep it thriving. Secure your spot now and bring the joy of fresh herbs to your home!

Tue. June 18, 6-8 pm
Register by June 13
Fee: \$35

ADULT SPORTS



INTRO TO PICKLEBALL

Are you interested in joining the exciting sport of Pickleball but have never played before? Join us at one of NKC's free clinics, where we cover the basic rules and techniques of the game, perfect for those looking to dive into one of the world's fastest-growing sports. Equipment will be provided for those who need it, but if you have your own gear, feel free to bring it along. Intro to Pickleball clinics will be held at Macken Park Tennis/Pickleball Courts. Limited spots available.

Tuesday, April 2 from 5-6:30 pm
Thursday, April 11 from 12-1:30 pm or 5-6:30 pm
Registration: March 4 - April 1
Fee: FREE

ADULT SOFTBALL

This is an entry Level softball league. This league is focused on friendly competition, building camaraderie, and having fun. Co-ed games are on Sunday evenings and men's games are Thursday evenings. All games are played at Macken Park. Each team will play eight double-header regular season games with an end-of-season tournament. **Captains meeting will be held virtually so all captains must attend. Teams must pay a \$50 nonrefundable deposit to hold their spot.**

SUMMER LEAGUE

Registration: May 17 - June 28 | Fees: \$410 per team | All fees must be paid in full by July 5

Co-Ed Division, Sundays 5 pm
Season Begins July 7
Captains Mtg. July 2, 5:30 pm

Men's Division, Thursdays 6 pm
Season Begins July 11
Captains Mtg. July 2, 6 pm



ALL CLASSES ARE HELD AT THE NKC PARKS & REC CENTER, LOCATED AT 1201 CLARK FERGUSON DRIVE, NORTH KANSAS CITY, MO 64116.

YOUTH CLASSES

ART CLASSES



TEDDY BEAR TEA PARTY

AGES 6-12
MS. HEATHER

It's time for a Royal Teddy Bear Tea Party! Students may come dressed as princes, princesses, or in a mythical costume if they would like. We will be making "tea" (lemonade with a choice of fresh strawberries or blueberries), decorating cookies, making "tea sandwiches" (sunbutter and jelly sandwiches), and stuffing their very own Teddy Bear. Students will add stuffing and Ms. Heather will sew up each bear as students get finished. All students will take home their new bear at the end of the party.

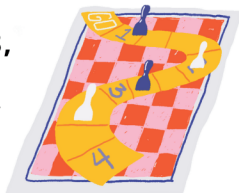
Mon. April 8, 6-7:45 pm
Register by March 24
Fee: \$30

CREATE YOUR OWN BOARDGAME

AGES 8-12 | MS. HEATHER

Students will use templates to create a board game of their very own! We will learn about mixed media and artists who do this style of art. We will also learn about board games, what was popular in the past and what is popular now. Then, we will create a game board, game pieces and rule book for the game.

Wed. May 8,
6-7:45 pm
Register by
May 2
Fee: \$25



COOKING CLASSES

PIONEER COOKING

AGES 6-13 | MS. HEATHER

Join us for a trip back in time to the Oregon Trail! We will be churning butter, baking cornbread, trying buffalo jerky, and making a pot of beans and "hasty pudding" and even a 101 year old pie recipe also called "water pie".

Wed. April 10, 6-8 pm
Register by April 4
Fee: \$25

SPRING BAKING

AGES 6-13 | MS. HEATHER

We will be making brownies, key lime pie cups, and aquarium cookies! This class will be so much fun!

Wed. April 24, 6-8 pm
Register by April 18
Fee: \$25

CANDY FUN

AGES 6-13 | MS. HEATHER

Join us for an amazing class all about Candy! We will be making Cinnamon Lollipops, "PeanutButter" cups using sunbutter, homemade mallomars and gummy candy!

Mon. May 6, 6-8 pm
Register by May 2
Fee: \$25

BAKING & SCIENCE!

AGES 6-13 | MS. HEATHER

It's time to experiment! We will be making edible slime, edible Mars Rover model, and edible soil layers! We will learn about science and how to make fun recipes at the same time!

Tue. May 21, 6-7:45 pm
Register by May 16
Fee: \$25

NORTH KANSAS CITY
PARKS & RECREATION



SOCCER CAMP

JUNE 17-JUNE 20
(3 DAY CAMP)

YOUTH ART CAMP

JUNE 24-JUNE 28
10 AM TO 3 PM

SOCCER CAMP

JULY 8-JULY 11
(4 DAY CAMP)

NATURE ADVENTURE

JULY 15-JULY 18
10 AM TO 3 PM

SUMMER BREAK CAMP

JULY 22-JULY 25
10 AM TO 3 PM

BAKING CAMP

JULY 30-AUG 2
10 AM TO 12:30 PM

Registration → **\$150**
nkcparcsandrec.org/camp



NORTH KANSAS CITY
**PARKS &
RECREATION**

**ALL CLASSES ARE HELD AT THE NKC PARKS & REC CENTER, LOCATED AT
1201 CLARK FERGUSON DRIVE, NORTH KANSAS CITY, MO 64116.**

EVENTS

NORTH KANSAS CITY PARKS & REC PRESENTS

MOVIES *in the park*



FREE & OPEN TO THE PUBLIC

FRI, JUN 21 *TMNT: MUTANT MAYHEM*

FRI, JUL 19 *FERNGULLY*

FRI, AUG 16 *GHOSTBUSTERS: FROZEN EMPIRE*

MACKEN PARK	1002 CLARK FERGUSON DRIVE, NKC MO 64116	STARTS AT DUSK
--------------------	--	-----------------------





ARTS IN THE PARK

JUNE 7&8 MACKEN PARK
 FRI 5-10PM | SAT 10AM-8PM
 ART, MUSIC, FOOD, & BREWS

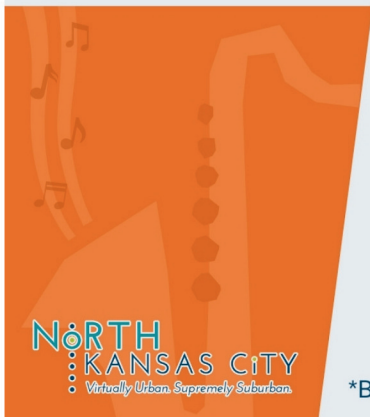
FRIDAY HEADLINER	SATURDAY HEADLINER
SELEKTO SHOW	THE ELDERS



ARTSINTHEPARK.ORG

FRIDAY IN THE PARK

11:30 AM - 1 PM MACKEN PARK FESTIVAL SHELTER



IN COOPERATION WITH THE MUSIC PERFORMANCE TRUST FUND, LOCAL 34-627

- | | |
|--|--|
| JUNE 7: NO CONCERT - ARTS IN THE PARK | AUG 2: TURPINE TYME RAGSTERS (RAGTIME) |
| JUNE 14: TOM'S TOWN (BLUES/JAZZ) | AUG 9: MELISSA & COMPANY (COUNTRY) |
| JUNE 21: DOUG TALLEY QUARTET (JAZZ) | AUG 16: PENDERBLAST RED-E-MIX (VARIETY) |
| JUNE 28: HULA-HALI 'O KIAKAHI (HAWAIIAN) | AUG 23: NEW RED ONION JAZZ BABIES |
| JULY 5: THE BLUE & GRAY BRASS BRIGADE | AUG 30: FESTHAUS MUSIKANTEN (GERMAN) |
| JULY 12: KC SWING BAND (VARIETY) | SEPT 6: THE BEACH NUTS (FAMILY FAV'S) |
| JULY 19: GRANDVIEW STATION (BLUEGRASS) | SEPT 13: MARIMBA SOL DE CHIPAS (MEXICAN) |
| JULY 26: HOGFISH GUMBO (CAJUN) | SEPT 20: THE BRAD ALLEN TRIO (JAZZ) |
| | SEPT 27: THE ALPEN SPEILERS (GERMAN) |

*Bands subject to change. Free & open to the public. Visit nkc.org/events for additional information.

AN APP FOR THAT Now you can browse the Library's Missouri Evergreen collection (more than 3 million items!) via an app. Search for **Missouri Evergreen** in your device's app store.



NORTH KANSAS CITY PUBLIC LIBRARY



2251 Howell | NKCMO | 816.221.3360 | nkcp.org

NKCPL is a full-service, stand-alone library located in the heart of historic North Kansas City. Check out some of our offerings here, then go to nkcp.org for more details about our services and events!

FIND TECH ACCESS & MORE AT NKCP

LIBRARY SERVICES



Looking for digital resources? Tech or wifi access? Maybe just a spot to get some work done? The Library has you covered! Beyond offering computer and wifi access, we can help you print, photocopy, fax, and scan. We even have a notary on staff!

And if you just need a quiet spot to work, we can assist with that, too. Ask about our study rooms, which are located on our lower level and are available by reservation or on a walk-in basis. Let us know how we can help you today!

NOW OFFERING SPRING FIBERS FUN

FOR ADULT LEARNERS



FIBERS FUN

NKCPL is excited to offer ***TWO*** types of fibers classes for new and returning fibers lovers this spring! Do you knit or crochet, or want to learn? Join us for **Knit Happens**, an intro to knitting series taught by instructor Monja Calvert. Or maybe crochet? Instructor Erica Sheer is teaching a **Learn to Crochet** series at the Library, too. Both spring fibers series are geared toward new learners, but experienced knitters/crocheters are also welcome. Go to nkcp.org for class dates and materials lists.

Have a question? Give us a call! Library hours are Mon-Thurs 9-9, Fri 9-6, and Sat 9-5.



FOR LITTLE ONES



JOIN US FOR STORYTIME

TUES @ 6 PM & WED @ 10 AM
IN THE ORANGE MURAL ROOM NO REGISTRATION REQUIRED!



ADVENTURE
— BEGINS AT —
YOUR LIBRARY.

Nora the NKCP Library tortoise loves Summer Reading! Stop by and tell her hello next time you're in the neighborhood!



SUMMER READING 2024

Stay tuned for details about this year's Summer Reading Program, where you can log your reads to earn rewards and prizes, June-mid-August. This year's theme? **Adventure Begins at Your Library!** Summer Reading is for folks of all ages — infants on up! — and you don't even need a Library card to participate. Plus, you can sign up and log all your reads online! You can visit nkcp.org on or after June 1 to register and start logging, and for more Summer Reading info.

PLUS A BIG T-REX VISIT IN JUNE!

Summer is a time for some extra-special programs at NKCP — and this year is no exception! Join us on **Saturday, June 22, at 10 a.m.** for a meet-and-greet with a very large-and-in-charge T-Rex visitor, courtesy of Show Me Dinosaurs. There might even be some baby dinos in the mix! Go to nkcp.org for more info and to register.



For a full/current calendar of library events — including Storytimes, special events, and classes in our in-house sewing lab! — go to nkcp.org.



Looking for a way to give back to the community this year? Consider donating blood! On **Friday, April 5**, NKCP partners with the American Red Cross to host a Blood Drive at the Library — part of a new partnership that will bring the Red Cross to our building several times throughout the year.

This event will take place in the large Meeting Room on the building's lower level from 10:30-2:30 pm, and donors are encouraged to register in advance. Want to donate? Go to nkcp.org for more info and to register!

Check out **Libby**, a free app that offers access to thousands of digital books! (If you used Overdrive in the past, Libby is the new version of that platform.) Available wherever you get your apps.



COMMUNITY CALENDAR

APRIL

Municipal Election

April 2
YMCA

Boneanza

April 6
Waggin' Trail Dog Park

Community Shred Event

April 27, 9 a.m. to Noon
City Hall

MAY

Animal Vaccination Day

May 4, 2-4 p.m.
City Hall

Citywide Garage Sale

May 18

Dagg Splash Park Opens

May 25, 10 a.m.

Memorial Day City Offices Closed

May 27

JUNE

Arts in the Park

June 7, 5-10 p.m.
Macken Park

Arts in the Park

June 8,
10 a.m. to 8 p.m.
Macken Park

Friday in the Park

Tom's Town
June 14, 11:30 a.m.
Macken Park

Friday in the Park

Doug Talley Quartet
June 21, 11:30 a.m.
Macken Park

Movies in the Park

TMNT: Mutant Mayhem
June 21, dusk
Macken Park

Friday in the Park

Hula-Hale 'O Kiakahi
June 28, 11:30 a.m.
Macken Park

CONNECT with us!

Animal Control274.6024	Parks & Recreation300.0545
City Hall.....274.6000	Police Department274.6013
Code Compliance.....274.6006	Public Works.....274.6004
Fire Department.....274.6025	Water Billing274.6000
Home Security Surveys by Police Dept274.6013	Water Pollution Monitoring.....274.6021
Home Inspections by Fire Dept.....274.6025	Emergency911
Library221.3360	
liNKCity412.7990	
Municipal Court.....274.6007	

www.nkc.org

www.facebook.com/cityofnkc

@cityofnkc

@cityofnkc

YouTube

CONTACT US
 City Hall
 2010 Howell St.
 North Kansas City, MO 64116
 816-274-6000
Regular Hours
 Monday-Friday 8 a.m.-5 p.m.

For more information about City events, services and programs visit www.nkc.org.