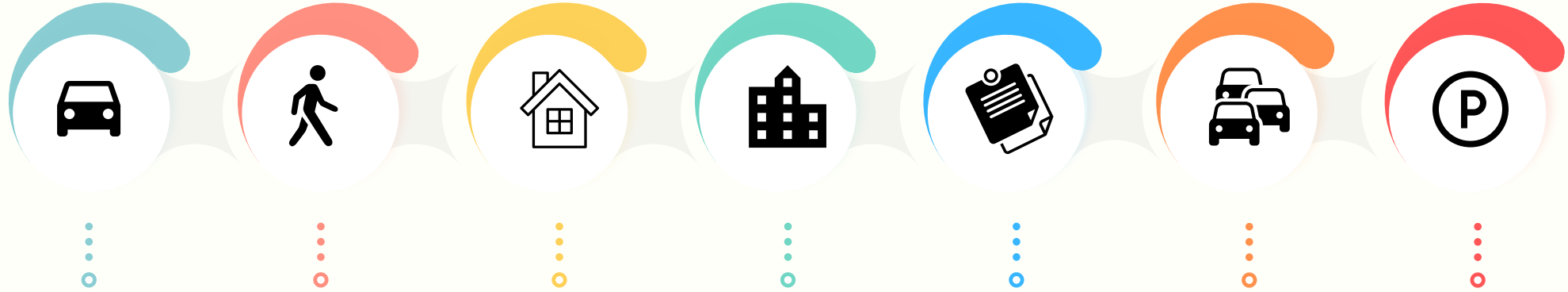


# PATROL UNIT

## 2024 - JANUARY



734

### CAR CHECK

Officers conduct car checks when a traffic violation, parking violation, or suspicious vehicle is observed. Vehicles may be occupied or unoccupied depending on the circumstances of the event.

780

### PEDESTRIAN CHECK

Pedestrian checks are conducted when an officer contacts the driver or occupants of a vehicle stopped for a traffic violation or who are believed to be involved in criminal activity. Pedestrian checks may also be conducted when officers are called to a residence, obtain the identifying information of the people present, and conduct a law enforcement database search of those people for any outstanding warrants.

232

### RESIDENTIAL CHECK

Residential checks are conducted when officers physically respond to a residence regarding a call for service or check the exterior of a residence that is enrolled in the residence check program while the occupants are out of town.

2610

### BUILDING CHECK

Building checks are conducted when an officer is called to a building/business or physically checks the exterior of a building/business for unsecured entry points after hours of operation. This is done to identify if a closed business is susceptible to criminal activity or has already been the victim of criminal activity.

32

### GENERAL ORDINANCE SUMMONS

Citations issued by an officer to individuals for municipal code violations that require a court appearance or payment of fine.

126

### TRAFFIC TICKETS

Citations issued by an officer for municipal traffic code violations that require a court appearance or payment of fine.

20

### PARKING TICKETS

Citations issued by an officer for municipal parking violations that require a payment of fine.